

Contract (paid up)
from Anna and
Matilda Bowsher
100ft wide across
W 1/2 NE 1/4 & NW 1/4
SE 1/4 & E 1/2 NW 1/4 SEC 15
Pd. 12-7-72 '888'

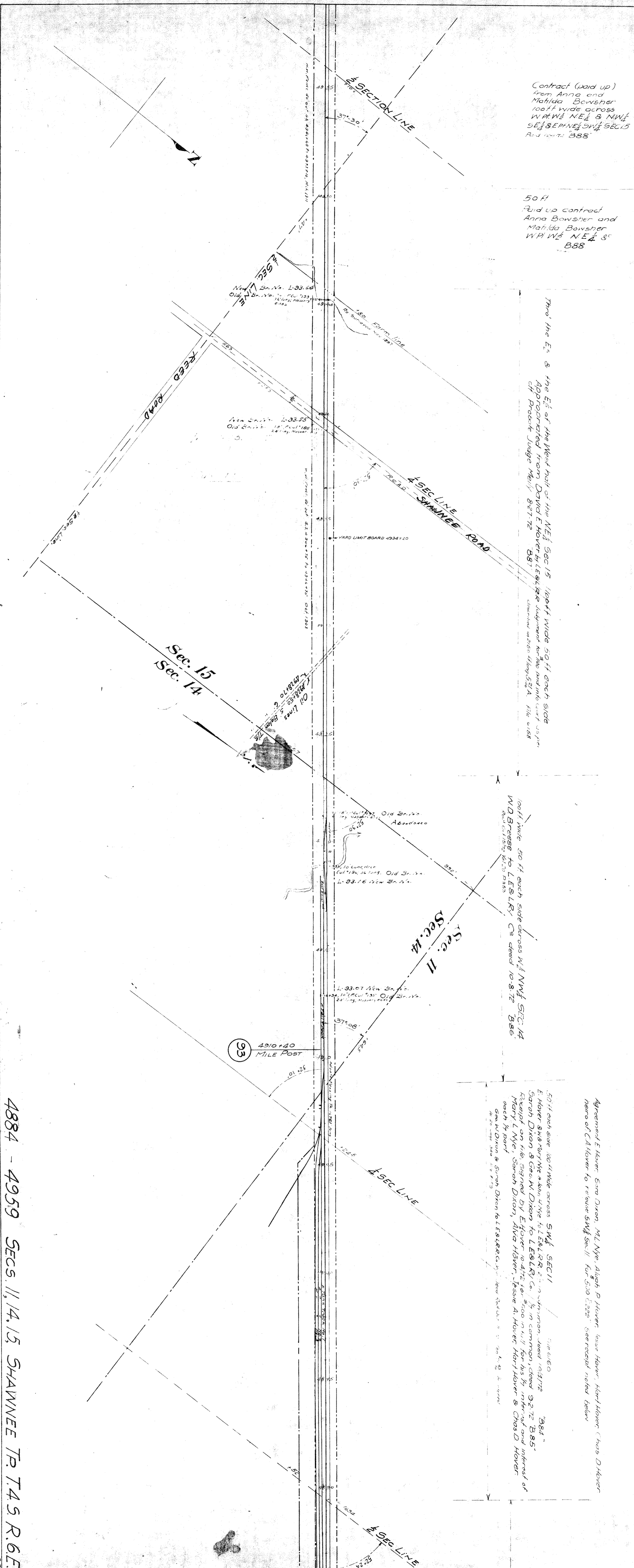
50 ft
Paid up contract
Anna Bowsher and
Matilda Bowsher
W 1/2 NE 1/4 &
888

Thru the E 1/2 & the E 1/2 of the West half of the NE 1/4 Sec 15 100ft wide 50 ft each side
Appropriated from David E Hoyer by LE&LR Judgment for the and into court us per
of Proctor Judge Mealy 8-27-72 '881
described as 2160 ft long 52 ft A. file 6158

100ft wide 50 ft each side across NW 1/4 NW 1/4 SEC 14
WD Breese to LE&LR Co deed 10-8-72 '886'

Agreement E Hoyer, Geo Dixon, M L Nye, Alvin P Hoyer, Isaac Hoyer, Harri Hoyer (has Dixon
name of C Hoyer to release SW 1/4 Sec 11 for 500 '222' See receipt noted below

50 ft each side 100 ft wide across SW 1/4 SEC 11
E Hoyer & Harri Nye & Alvin Nye to LE&LR Co 2 1/2 in common deed 10-11-72 '884'
Sarah Dixon & Geo W Dixon to LE&LR Co 1/2 in common deed 9-2-72 '885'
Rec'd on file signed by E Hoyer 10-4-72 for 500 ft for his 1/2 interest and interest of
Mary L Nye, Sarah Dixon, Alva Hoyer, Jesse A Hoyer, Harri Hoyer & Chas D Hoyer
each 1/4 part
Geo W Dixon & Sarah Dixon to LE&LR Co deed 10-11-72 '884'



4884 - 4959 SECS. 11, 14, 15, SHAWNEE TR. T. 4 S. R. 6 E.