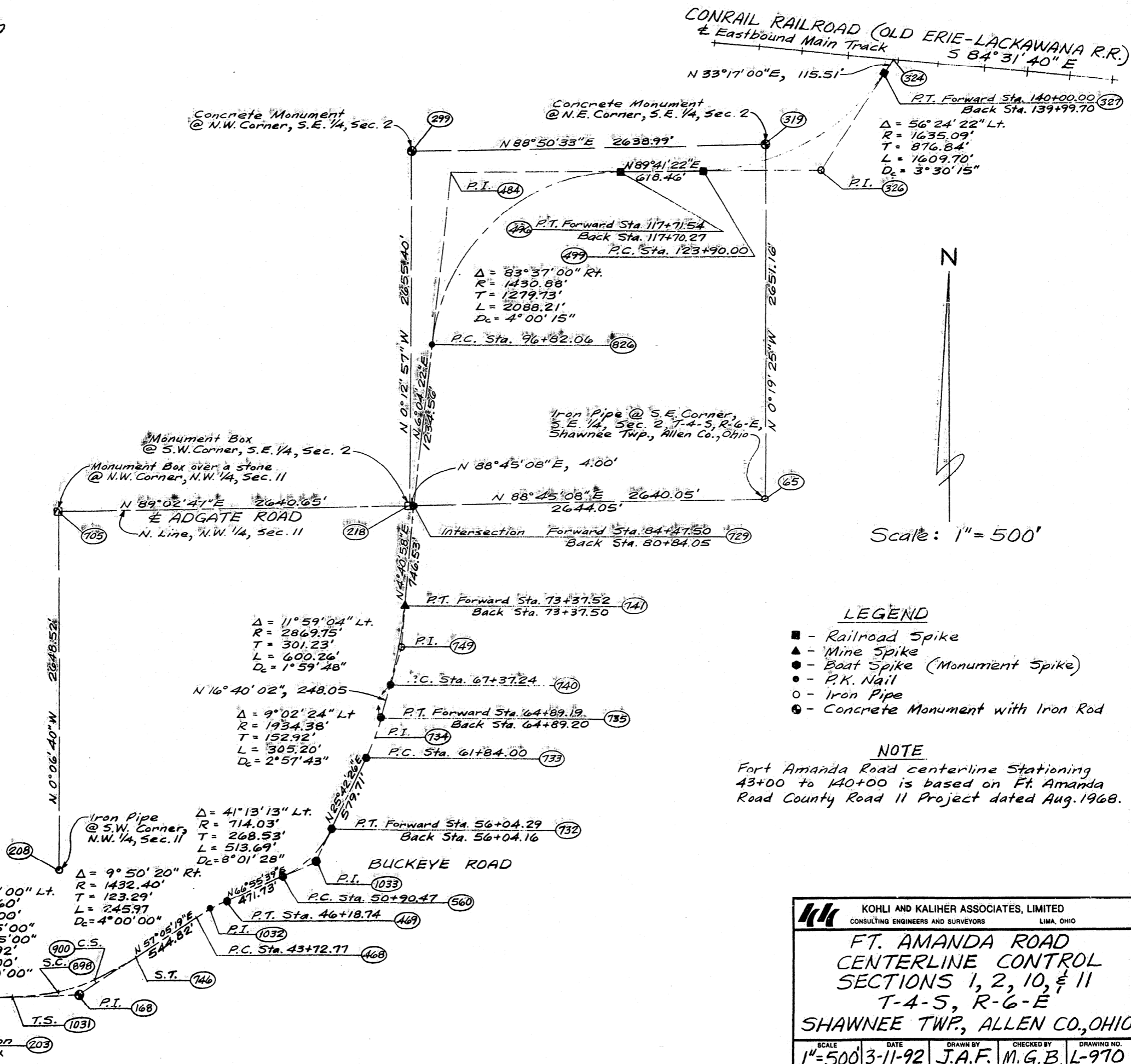


# Road No. 11

BP Oil Company  
Refinery Coordinate Datum

Point Number	SOUTH	WEST
65	-3149.4447	-3980.7547
168	-6797.4060	-9113.6530
203	-6840.1200	-10586.3860
208	-5899.6830	-9259.3210
218	-3207.2150	-6624.1790
299	-351.8350	-6634.1800
319	-498.5250	-3995.7330
324	137.6687	-3034.6164
326	-691.9065	-3579.2001
327	41.1028	-3098.0081
468	-6231.5609	-8239.3676
469	-6116.2559	-8022.4360
484	-706.9498	-6354.1893
496	-700.0125	-5074.4781
499	-696.6598	-4456.0272
560	-5931.3877	-7588.4395
705	-3251.1646	-9264.4612
729	-3207.1279	-6620.1799
732	-5584.2008	-7224.9083
733	-5061.8691	-6973.4460
734	-4924.0847	-6907.1135
735	-4777.5893	-6863.2544
740	-4539.9606	-6792.1111
741	-3951.1615	-6681.1237
746	-6527.5834	-8696.7510
749	-4251.3860	-6705.7151
826	-1979.4984	-6489.5740
898	-6783.8990	-9261.5161
900	-6702.3793	-8999.5659
1031	-6811.8029	-9610.0443
1032	-6144.5725	-8135.8641
1033	-5826.1523	-7341.3892



Scale: 1" = 500'

**LEGEND**

- - Railroad Spike
- ▲ - Mine Spike
- - Boat Spike (Monument Spike)
- - P.K. Nail
- - Iron Pipe
- ⊙ - Concrete Monument with Iron Rod

**NOTE**

Fort Amanda Road centerline Stationing 43+00 to 140+00 is based on Ft. Amanda Road County Road 11 Project dated Aug. 1968.

KOHLI AND KALIBER ASSOCIATES, LIMITED CONSULTING ENGINEERS AND SURVEYORS LIMA, OHIO				
<b>FT. AMANDA ROAD CENTERLINE CONTROL SECTIONS 1, 2, 10, &amp; 11 T-4-S, R-6-E SHAWNEE TWP., ALLEN CO., OHIO</b>				
SCALE	DATE	DRAWN BY	CHECKED BY	DRAWING NO.
1"=500'	3-11-92	J.A.F.	M.G.B.	L-970