

NOTES

PRECAST CATCH BASINS - SHALL BE APPROVED BY THE COUNTY ENGINEER ON A PER APPLICATION BASIS.

GRATING AND FRAME - SHALL BE NEENAH GRATE No. R-4871 AND FRAME No. R-4899, EAST JORDAN 5110 OR SHALL MEET THE REQUIREMENTS OF THE COUNTY ENGINEER. THE DESIGN SHALL BE ESSENTIALLY THE SAME AND EQUALLY AS STRONG AS THE ONE SHOWN HEREON.

WEIGHT OF GRATE = 115 lbs. (MINIMUM)
WEIGHT OF FRAME = 40 lbs. (MINIMUM)

CONCRETE - CAST IN PLACE TO BE CLASS "C".

CONCRETE BLOCK - SIDE WALLS, WHEN USED IN PLACE OF CONCRETE, SHALL BE 8 INCHES NOMINAL THICKNESS.

REINFORCING - IN THE TOP SHALL BE 1/2 INCH DEFORMED BARS, 6 INCHES CENTER TO CENTER. FOR STANDARD No. 2-3 USE 8 BARS AND FOR STANDARD No. 2-4 USE 12 BARS.

FLOWLINE - OF A PIPE DISCHARGING WATER INTO A CATCH BASIN SHALL BE ARRANGED WHENEVER POSSIBLE TO HAVE THE TOP OF SUCH PIPE AT LEAST AS HIGH AS THE TOP OF THE OUTLET PIPE.

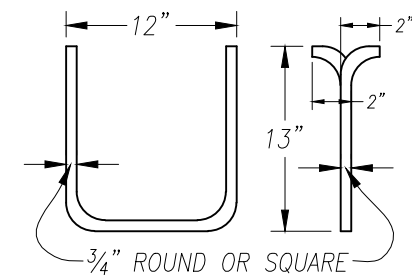
SIDE INLETS - TO BE PLACED 4 TO 6 INCHES BELOW NORMAL ELEVATION OF BOTTOM OF SIDE DITCH. SIDE INLETS MAY BE OMITTED WHEN SO STATED ON THE PLANS OR AT THE DIRECTION OF THE COUNTY ENGINEER.

SIZE OF CATCH BASIN - TO BE DETERMINED BY THE SIZE OF THE OUTLET PIPE AS PER THE FOLLOWING TABLE:

SIZE OF PIPE	SIZE OF CATCH BASIN
18" - 27"	2-3
30" - 36"	2-4

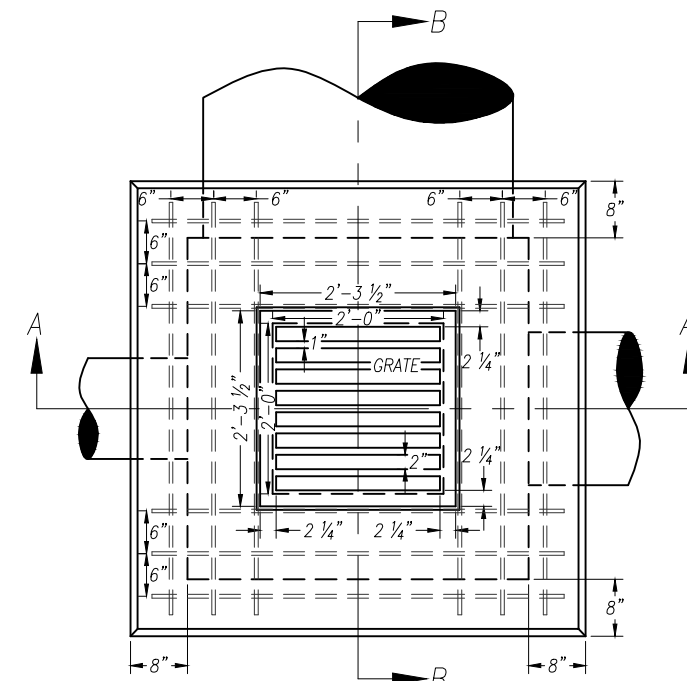
STEPS - SHALL BE PROVIDED WHERE THE DEPTH EXCEEDS 72" AND SHALL MEET THE REQUIREMENTS OF THE COUNTY ENGINEER.

CATCH BASIN SPACING - CATCH BASIN SPACING SHALL BE 500 FEET MAXIMUM OR AS REQUIRED TO MEET ANY DRAINAGE REQUIREMENTS OF REGULATORY REQUIREMENTS.



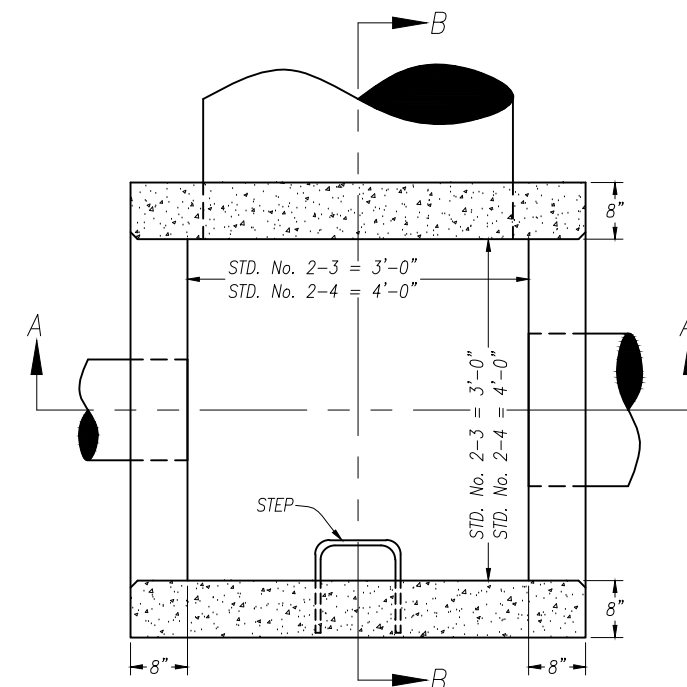
STEP DETAIL

REVISIONS			ALLEN COUNTY, OHIO	
NO.	DATE	BY	COUNTY ENGINEER	
1	6-26-79	TJP	CATCH BASIN DETAILS	
2	11-13-89	TJP		
3	10-5-06	RJM		
4	5-12-16	ZIG		
			STANDARD CONSTRUCTION DRAWING CB-2-3 & 2-4	
			DRAWN BY: Z.I.G. APPROVED BY: B. E. RHODES	

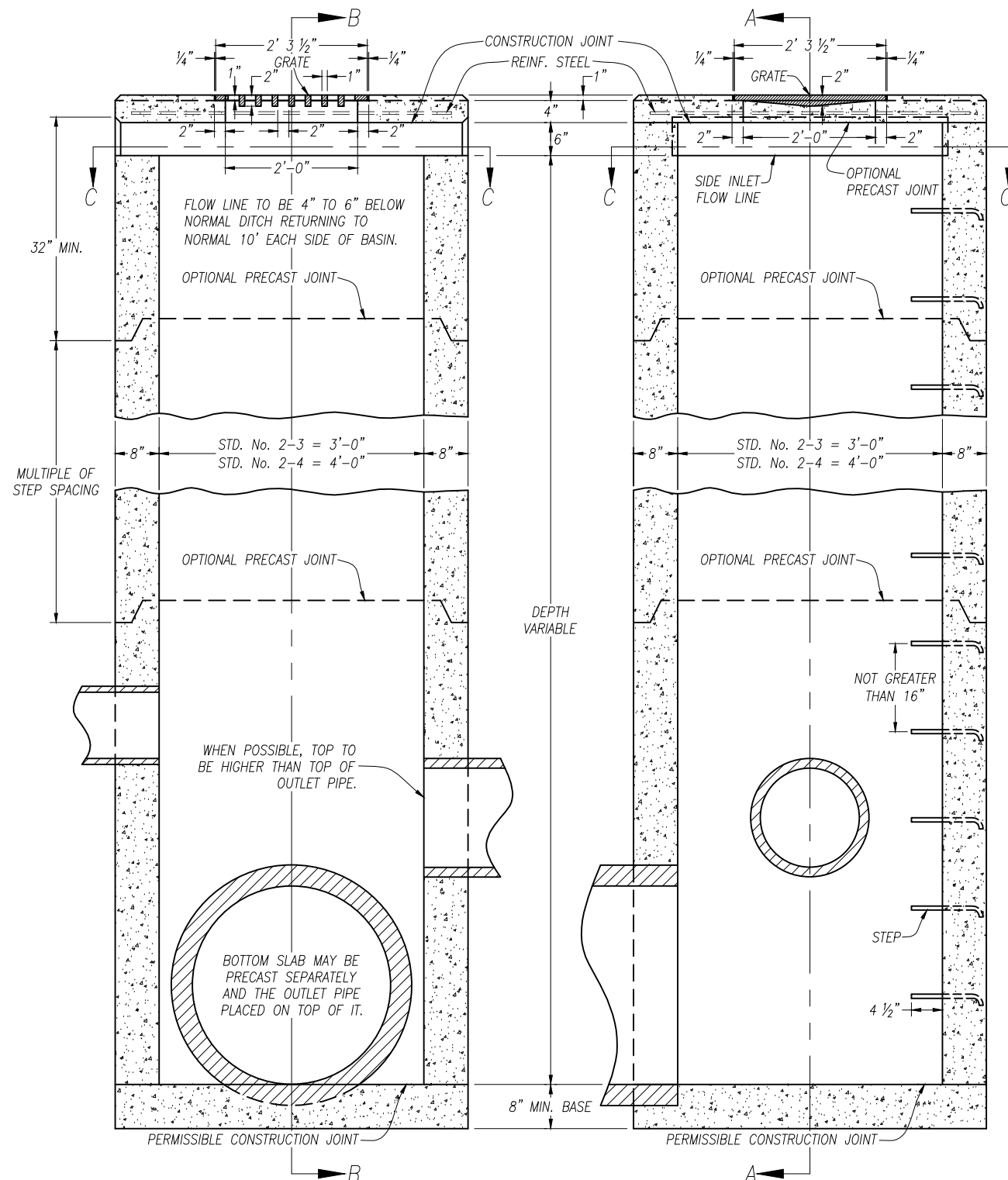


PLAN

ALL GRATE EDGES TO BE ROUNDED TO 1/4" RADIUS.



SECTION C-C



SECTION A-A

SECTION B-B