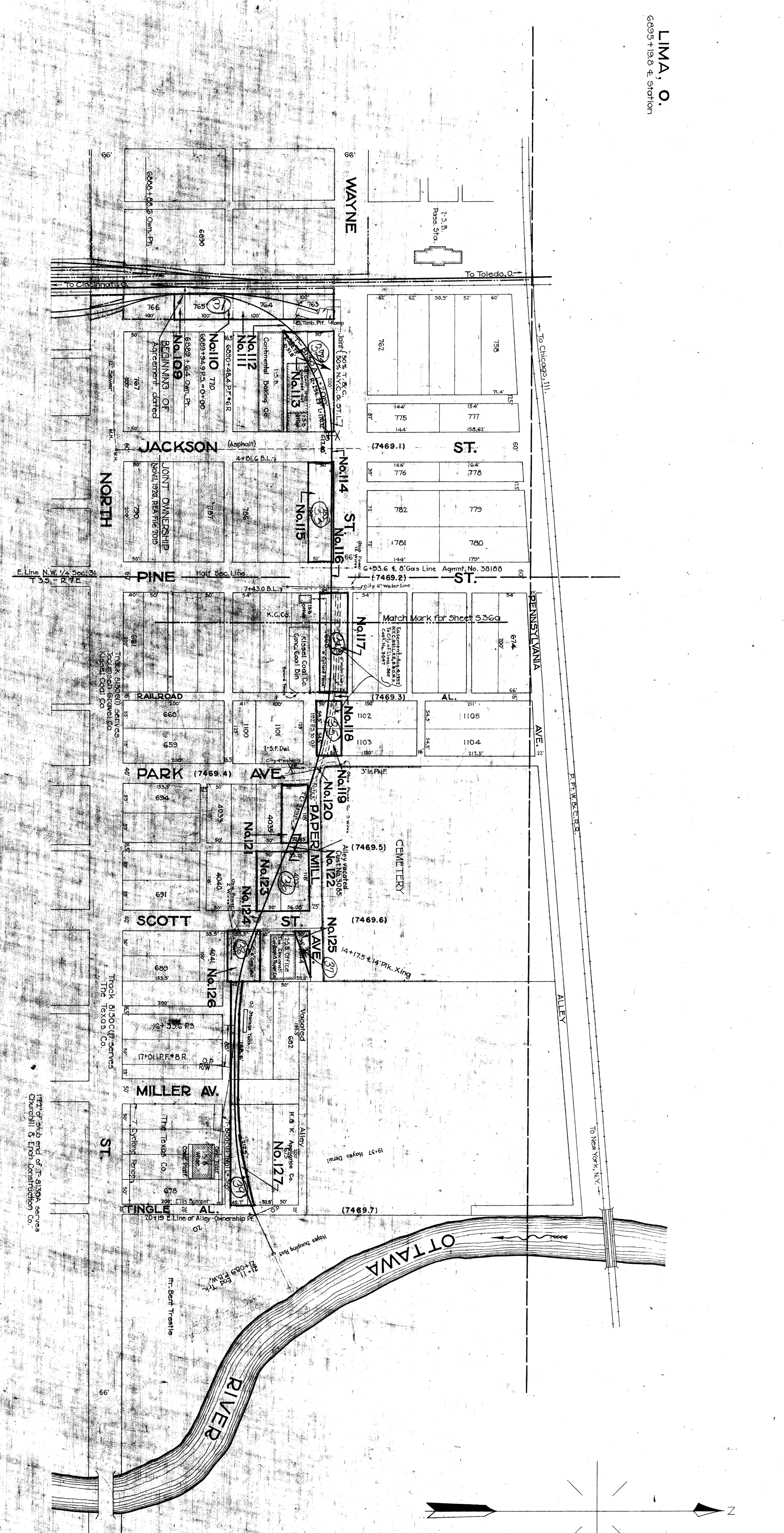


ALLEN COUNTY, OHIO.
BATH TOWNSHIP
T. 35. - R. 7E.

LIMA, O.
6635+138 E. Station



FOR LAND SCHEDULE SEE SHEET NO. 36A.
FOR SCHEDULE E OF CHANGES, AFTER
DATE OF VALUATION SEE SHEET NO. 36B.

Notes:
Property and tracts shown on this map
are owned jointly with NYC & STL RR.
Validation: E. G. ...
Sheet No. 356d of T. 1, primary and 55 supplemental sheets

THE BALTIMORE AND OHIO RAILROAD COMPANY
AND
DAYTON AND MICHIGAN RAILROAD COMPANY
OPERATED BY
THE BALTIMORE AND OHIO RAILROAD COMPANY
TOLDO-INDIANAPOLIS DIV. MAIN LINE
STATION TO STATION
JUNE 30, 1918
SCALE: 1 IN. = 100 FT.
OFFICE OF VALUATION ENGINEER
BALTIMORE, MD.

RECORD OF CHANGES BY THE STATE OF VALUATION
STATION MAP

Lot No.	Area	Owner
110	0.12	...
111	0.12	...
112	0.12	...
113	0.12	...
114	0.12	...
115	0.12	...
116	0.12	...
117	0.12	...
118	0.12	...
119	0.12	...
120	0.12	...
121	0.12	...
122	0.12	...
123	0.12	...
124	0.12	...
125	0.12	...
126	0.12	...
127	0.12	...

41

82

