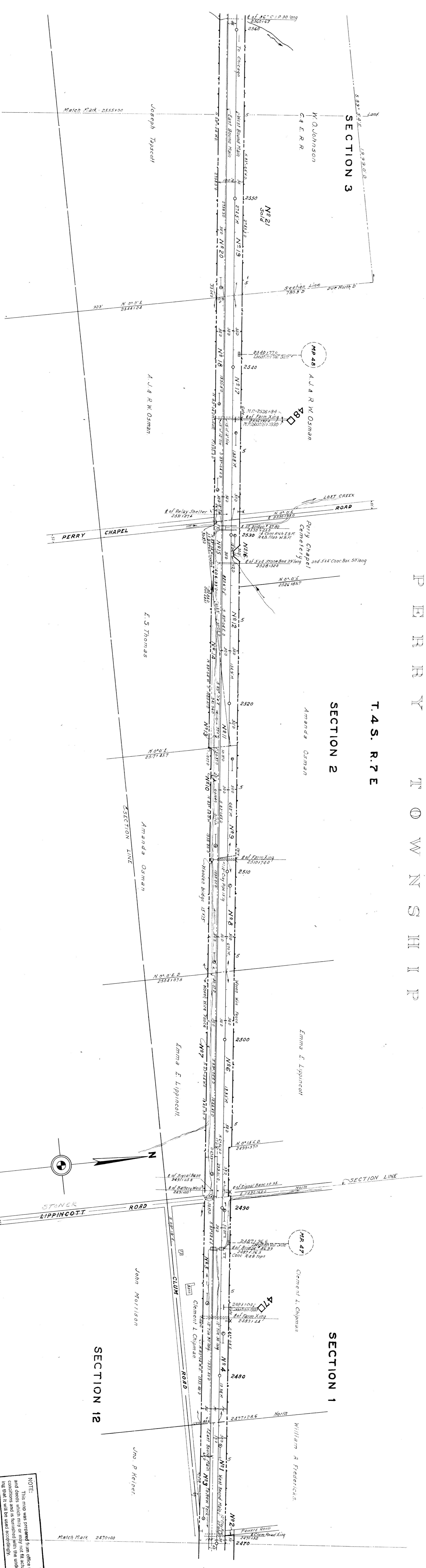


ALLIEN COUNTY PERRY TOWNSHIP

T. 4 S. R. 7 E



M-188

NOTE: This map was prepared from office records and does not represent the actual field conditions which may exist. The undersigned hereby certifies that the same will be used accordingly.

M-188

OWNED AND OPERATED BY
ERIE RAILROAD COMPANY
 AS OF DEC. 22, 1941
RIGHT OF WAY AND TRACK MAP
 OPERATED BY
CHICAGO AND ERIE R.R. CO.
C. & E. RAILROAD CO.
 MARION DIVISION

Sheet No. 30 1/2 S. 2 - One of Chicago & Erie Railroad Co.
 from survey made 2/17/10 to survey made 2/25/10
 Station 2470100, Station 2551100
 Scale 1 inch = 200 Ft. June 30, 1918
 Office of Utilization Engineer
 New York, N.Y.
 Valuation Engineer