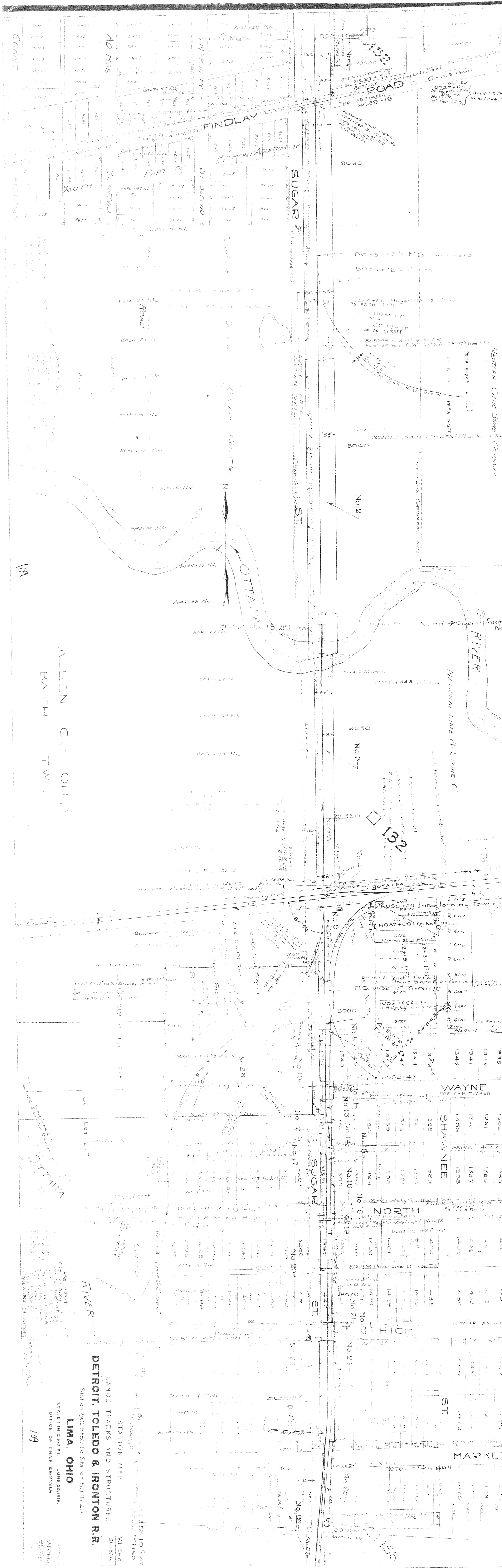


No.	GRANTOR	DATE	RECORD	CITIES
1	J.R. Williams	July 2, 1901	1091	109
2	J.R. Williams	July 2, 1901	1092	109
3	J.R. Williams	July 2, 1901	1093	109
4	J.R. Williams	July 2, 1901	1094	109
5	J.R. Williams	July 2, 1901	1095	109
6	J.R. Williams	July 2, 1901	1096	109
7	J.R. Williams	July 2, 1901	1097	109
8	J.R. Williams	July 2, 1901	1098	109
9	J.R. Williams	July 2, 1901	1099	109
10	J.R. Williams	July 2, 1901	1100	109
11	J.R. Williams	July 2, 1901	1101	109
12	J.R. Williams	July 2, 1901	1102	109
13	J.R. Williams	July 2, 1901	1103	109
14	J.R. Williams	July 2, 1901	1104	109
15	J.R. Williams	July 2, 1901	1105	109
16	J.R. Williams	July 2, 1901	1106	109
17	J.R. Williams	July 2, 1901	1107	109
18	J.R. Williams	July 2, 1901	1108	109
19	J.R. Williams	July 2, 1901	1109	109
20	J.R. Williams	July 2, 1901	1110	109
21	J.R. Williams	July 2, 1901	1111	109
22	J.R. Williams	July 2, 1901	1112	109
23	J.R. Williams	July 2, 1901	1113	109
24	J.R. Williams	July 2, 1901	1114	109
25	J.R. Williams	July 2, 1901	1115	109
26	J.R. Williams	July 2, 1901	1116	109
27	J.R. Williams	July 2, 1901	1117	109
28	J.R. Williams	July 2, 1901	1118	109
29	J.R. Williams	July 2, 1901	1119	109
30	J.R. Williams	July 2, 1901	1120	109
31	J.R. Williams	July 2, 1901	1121	109
32	J.R. Williams	July 2, 1901	1122	109
33	J.R. Williams	July 2, 1901	1123	109
34	J.R. Williams	July 2, 1901	1124	109
35	J.R. Williams	July 2, 1901	1125	109
36	J.R. Williams	July 2, 1901	1126	109
37	J.R. Williams	July 2, 1901	1127	109
38	J.R. Williams	July 2, 1901	1128	109
39	J.R. Williams	July 2, 1901	1129	109
40	J.R. Williams	July 2, 1901	1130	109
41	J.R. Williams	July 2, 1901	1131	109
42	J.R. Williams	July 2, 1901	1132	109
43	J.R. Williams	July 2, 1901	1133	109
44	J.R. Williams	July 2, 1901	1134	109
45	J.R. Williams	July 2, 1901	1135	109
46	J.R. Williams	July 2, 1901	1136	109
47	J.R. Williams	July 2, 1901	1137	109
48	J.R. Williams	July 2, 1901	1138	109
49	J.R. Williams	July 2, 1901	1139	109
50	J.R. Williams	July 2, 1901	1140	109
51	J.R. Williams	July 2, 1901	1141	109
52	J.R. Williams	July 2, 1901	1142	109
53	J.R. Williams	July 2, 1901	1143	109
54	J.R. Williams	July 2, 1901	1144	109
55	J.R. Williams	July 2, 1901	1145	109
56	J.R. Williams	July 2, 1901	1146	109
57	J.R. Williams	July 2, 1901	1147	109
58	J.R. Williams	July 2, 1901	1148	109
59	J.R. Williams	July 2, 1901	1149	109
60	J.R. Williams	July 2, 1901	1150	109
61	J.R. Williams	July 2, 1901	1151	109
62	J.R. Williams	July 2, 1901	1152	109
63	J.R. Williams	July 2, 1901	1153	109
64	J.R. Williams	July 2, 1901	1154	109
65	J.R. Williams	July 2, 1901	1155	109
66	J.R. Williams	July 2, 1901	1156	109
67	J.R. Williams	July 2, 1901	1157	109
68	J.R. Williams	July 2, 1901	1158	109
69	J.R. Williams	July 2, 1901	1159	109
70	J.R. Williams	July 2, 1901	1160	109
71	J.R. Williams	July 2, 1901	1161	109
72	J.R. Williams	July 2, 1901	1162	109
73	J.R. Williams	July 2, 1901	1163	109
74	J.R. Williams	July 2, 1901	1164	109
75	J.R. Williams	July 2, 1901	1165	109
76	J.R. Williams	July 2, 1901	1166	109
77	J.R. Williams	July 2, 1901	1167	109
78	J.R. Williams	July 2, 1901	1168	109
79	J.R. Williams	July 2, 1901	1169	109
80	J.R. Williams	July 2, 1901	1170	109
81	J.R. Williams	July 2, 1901	1171	109
82	J.R. Williams	July 2, 1901	1172	109
83	J.R. Williams	July 2, 1901	1173	109
84	J.R. Williams	July 2, 1901	1174	109
85	J.R. Williams	July 2, 1901	1175	109
86	J.R. Williams	July 2, 1901	1176	109
87	J.R. Williams	July 2, 1901	1177	109
88	J.R. Williams	July 2, 1901	1178	109
89	J.R. Williams	July 2, 1901	1179	109
90	J.R. Williams	July 2, 1901	1180	109
91	J.R. Williams	July 2, 1901	1181	109
92	J.R. Williams	July 2, 1901	1182	109
93	J.R. Williams	July 2, 1901	1183	109
94	J.R. Williams	July 2, 1901	1184	109
95	J.R. Williams	July 2, 1901	1185	109
96	J.R. Williams	July 2, 1901	1186	109
97	J.R. Williams	July 2, 1901	1187	109
98	J.R. Williams	July 2, 1901	1188	109
99	J.R. Williams	July 2, 1901	1189	109
100	J.R. Williams	July 2, 1901	1190	109



STATION MAP
LANDS TRACKS AND STRUCTURES
DETROIT TOLEDO & IRONTON R.R.
Station 8025+00 to Station 8078+40
LIMA, OHIO
SCALE 1" = 100 FT.
JUNE 30, 1918.
OFFICE OF CHIEF ENGINEER
109

