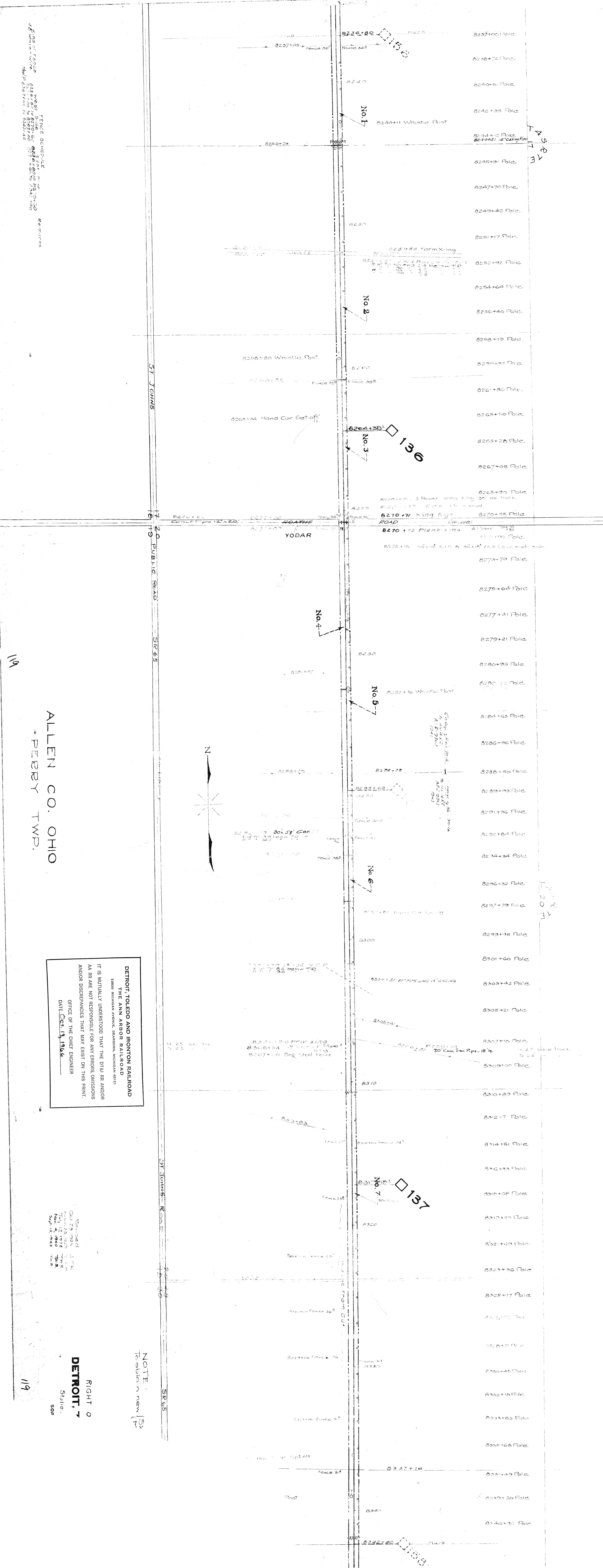


No	GRANTOR	GRANTEE	INSTRUMENT	DATE	RECORD	CUST No.	REMARKS
150	Jas J. McDonald John F. Book #1 John F. Phillips E. A. Partridge	OSRR	Warrant	June 10, 1893	141	60	Adverse Possession
151		OSRR	Warrant	June 10, 1893	141	60	Adverse Possession
152		OSRR	Warrant	June 10, 1893	141	60	Adverse Possession
153		OSRR	Warrant	June 10, 1893	141	60	Adverse Possession
154		OSRR	Warrant	June 10, 1893	141	60	Adverse Possession
155		OSRR	Warrant	June 10, 1893	141	60	Adverse Possession
156		OSRR	Warrant	June 10, 1893	141	60	Adverse Possession
157		OSRR	Warrant	June 10, 1893	141	60	Adverse Possession
158		OSRR	Warrant	June 10, 1893	141	60	Adverse Possession
159		OSRR	Warrant	June 10, 1893	141	60	Adverse Possession
160		OSRR	Warrant	June 10, 1893	141	60	Adverse Possession



DETROIT TOLEDO AND IRONTON RAILROAD
THE ANN ARBOR RAILROAD
 13800 MICHIGAN AVENUE, DETROIT, MICHIGAN 48221
 IT IS MUTUALLY UNDERSTOOD THAT THE DTL&I RR AND/OR
 AA RR ARE NOT RESPONSIBLE FOR ANY ERRORS, OMISSIONS
 AND/OR DISCREPANCIES THAT MAY EXIST ON THIS PRINT.
 OFFICE OF THE CHIEF ENGINEER
 DATE **Oct. 19, 1946**

Checked J.T.K.
 Oct. 22, 1946
 Drawn J.T.K.
 Nov. 4, 1946
 Scale 1/4" = 100'

RIGHT OF
DETROIT, 7
 Station.
 500

NOTE:
 Station new

ALLEN CO. OHIO
 PERRY TWP.

119

119