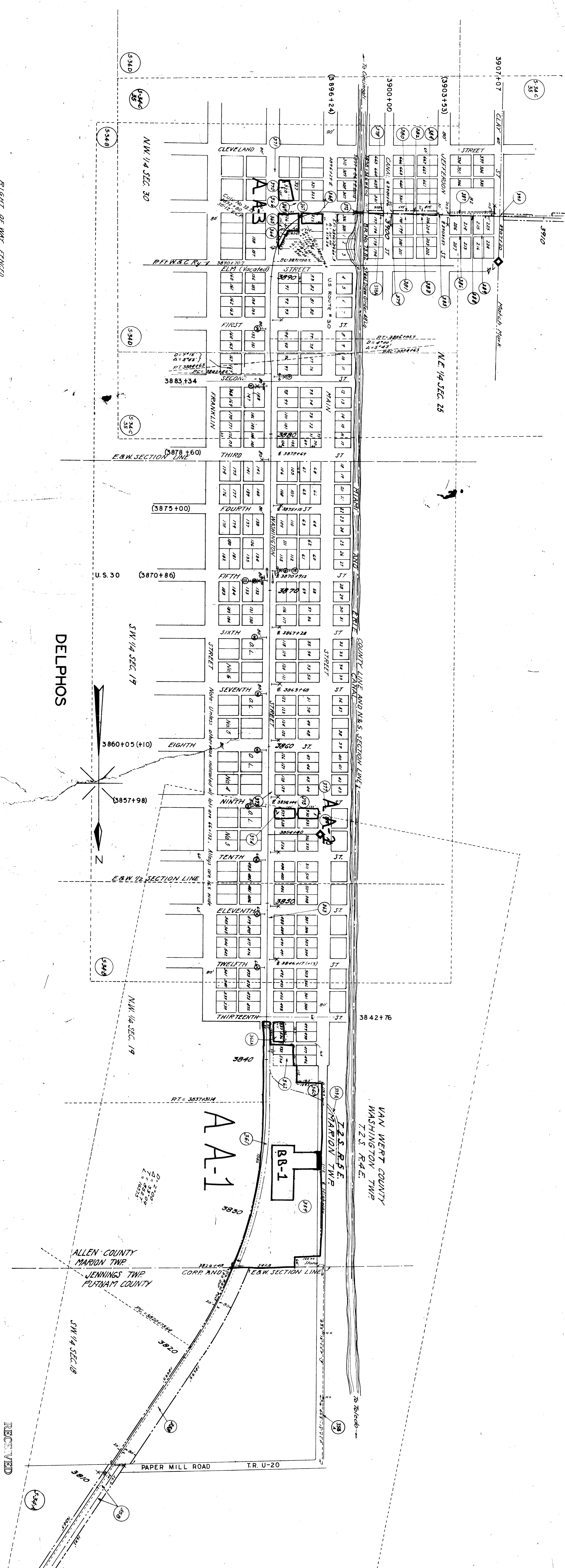


RIGHT OF WAY FENCED
On left side from Sta. 3805+00 to Sta. 3906+00

DELPHOS



RECEIVED
AUG. 1 1913
ALLEN COUNTY ENGINEER
THE NEW YORK, CHICAGO & ST. LOUIS R. R. CO.
CLOVER LEAF DISTRICT
STATION 3801+60 TO STATION 3907+20

ENGINEER
OPER OF CHIEF ENGINEER
CLEVELAND, OHIO