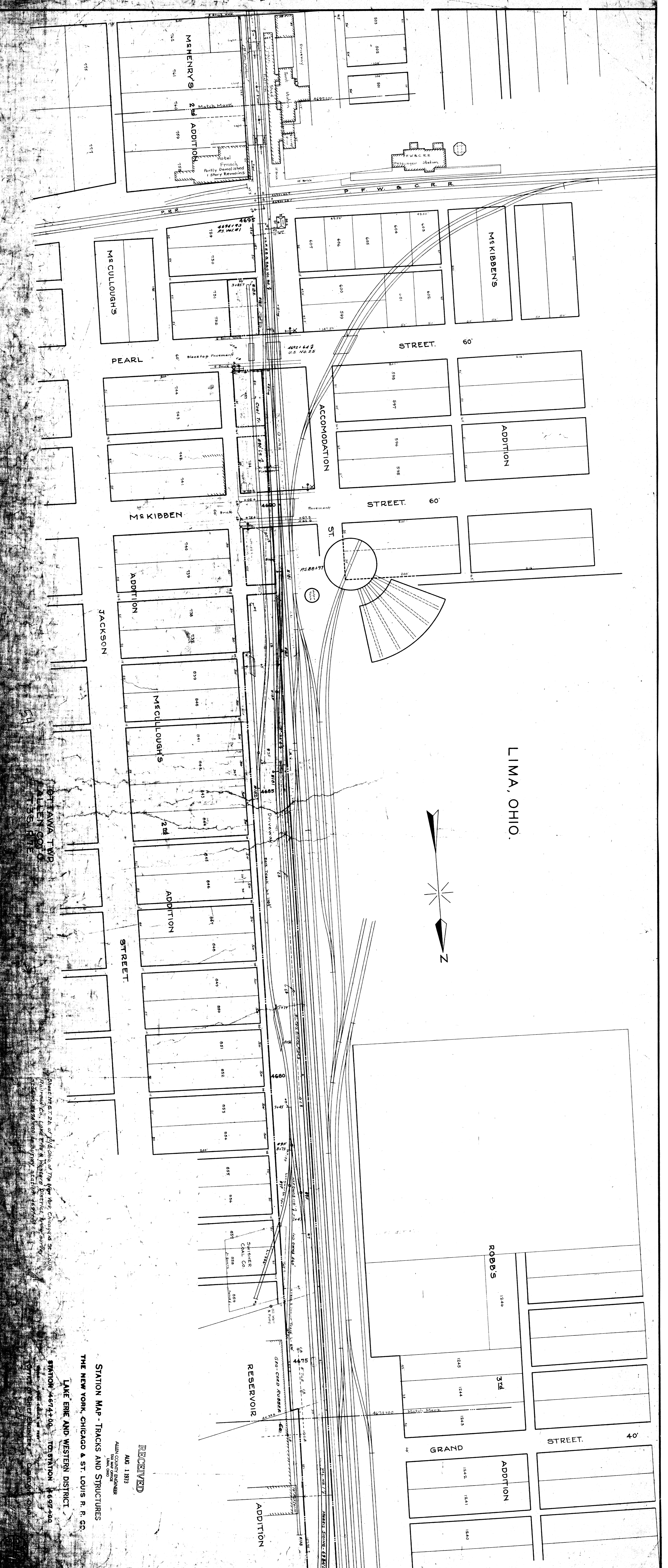
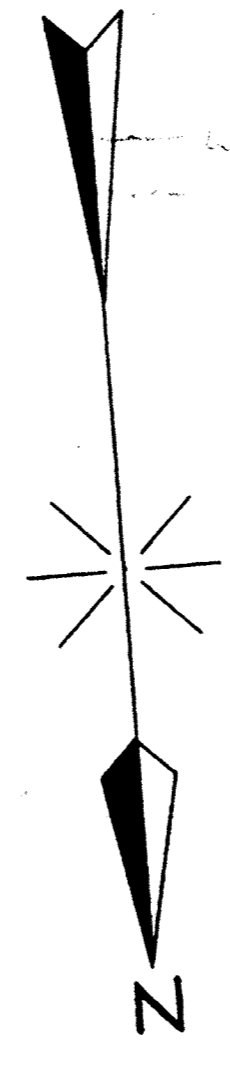


LIMA, OHIO.



STATION MAP - TRACKS AND STRUCTURES
THE NEW YORK, CHICAGO & ST. LOUIS R. R. CO.
LAKE ERIE AND WESTERN DISTRICT

RECEIVED
AUG 1 1913
ALLEN COUNTY ENGINEER
LIMA, OHIO

Sheet No. 22 of Division of The New York, Chicago & St. Louis
Railroad Co., Land in the Western District, New York
Station, Lima, Ohio, Survey Station 4587-22

STATION 4574+00 TO STATION 4697+00
OFFICE OF CHIEF ENGINEER, CLEVELAND, OHIO