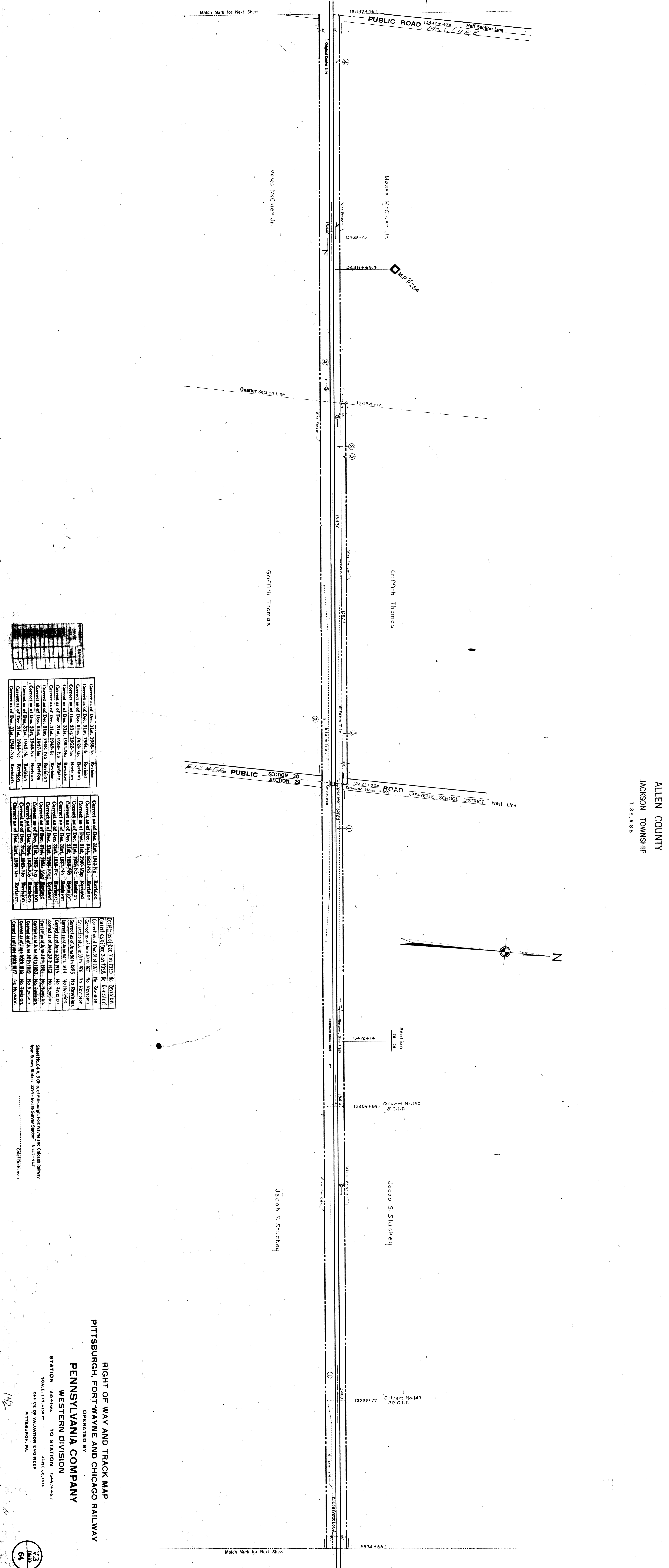


ALLEN COUNTY
JACKSON TOWNSHIP
T. S. RBE



Corrected as of Dec. 31st, 1925-26	Revision
Corrected as of Dec. 31st, 1924-25	Revision
Corrected as of Dec. 31st, 1923-24	Revision
Corrected as of Dec. 31st, 1922-23	Revision
Corrected as of Dec. 31st, 1921-22	Revision
Corrected as of Dec. 31st, 1920-21	Revision
Corrected as of Dec. 31st, 1919-20	Revision
Corrected as of Dec. 31st, 1918-19	Revision
Corrected as of Dec. 31st, 1917-18	Revision
Corrected as of Dec. 31st, 1916-17	Revision
Corrected as of Dec. 31st, 1915-16	Revision
Corrected as of Dec. 31st, 1914-15	Revision
Corrected as of Dec. 31st, 1913-14	Revision
Corrected as of Dec. 31st, 1912-13	Revision
Corrected as of Dec. 31st, 1911-12	Revision
Corrected as of Dec. 31st, 1910-11	Revision
Corrected as of Dec. 31st, 1909-10	Revision
Corrected as of Dec. 31st, 1908-09	Revision
Corrected as of Dec. 31st, 1907-08	Revision
Corrected as of Dec. 31st, 1906-07	Revision
Corrected as of Dec. 31st, 1905-06	Revision
Corrected as of Dec. 31st, 1904-05	Revision
Corrected as of Dec. 31st, 1903-04	Revision
Corrected as of Dec. 31st, 1902-03	Revision
Corrected as of Dec. 31st, 1901-02	Revision
Corrected as of Dec. 31st, 1900-01	Revision

Corrected as of Dec. 31st, 1924-25	Revision
Corrected as of Dec. 31st, 1923-24	Revision
Corrected as of Dec. 31st, 1922-23	Revision
Corrected as of Dec. 31st, 1921-22	Revision
Corrected as of Dec. 31st, 1920-21	Revision
Corrected as of Dec. 31st, 1919-20	Revision
Corrected as of Dec. 31st, 1918-19	Revision
Corrected as of Dec. 31st, 1917-18	Revision
Corrected as of Dec. 31st, 1916-17	Revision
Corrected as of Dec. 31st, 1915-16	Revision
Corrected as of Dec. 31st, 1914-15	Revision
Corrected as of Dec. 31st, 1913-14	Revision
Corrected as of Dec. 31st, 1912-13	Revision
Corrected as of Dec. 31st, 1911-12	Revision
Corrected as of Dec. 31st, 1910-11	Revision
Corrected as of Dec. 31st, 1909-10	Revision
Corrected as of Dec. 31st, 1908-09	Revision
Corrected as of Dec. 31st, 1907-08	Revision
Corrected as of Dec. 31st, 1906-07	Revision
Corrected as of Dec. 31st, 1905-06	Revision
Corrected as of Dec. 31st, 1904-05	Revision
Corrected as of Dec. 31st, 1903-04	Revision
Corrected as of Dec. 31st, 1902-03	Revision
Corrected as of Dec. 31st, 1901-02	Revision
Corrected as of Dec. 31st, 1900-01	Revision

Corrected as of Dec. 31st, 1923-24	No Revision
Corrected as of Dec. 31st, 1922-23	No Revision
Corrected as of Dec. 31st, 1921-22	No Revision
Corrected as of Dec. 31st, 1920-21	No Revision
Corrected as of Dec. 31st, 1919-20	No Revision
Corrected as of Dec. 31st, 1918-19	No Revision
Corrected as of Dec. 31st, 1917-18	No Revision
Corrected as of Dec. 31st, 1916-17	No Revision
Corrected as of Dec. 31st, 1915-16	No Revision
Corrected as of Dec. 31st, 1914-15	No Revision
Corrected as of Dec. 31st, 1913-14	No Revision
Corrected as of Dec. 31st, 1912-13	No Revision
Corrected as of Dec. 31st, 1911-12	No Revision
Corrected as of Dec. 31st, 1910-11	No Revision
Corrected as of Dec. 31st, 1909-10	No Revision
Corrected as of Dec. 31st, 1908-09	No Revision
Corrected as of Dec. 31st, 1907-08	No Revision
Corrected as of Dec. 31st, 1906-07	No Revision
Corrected as of Dec. 31st, 1905-06	No Revision
Corrected as of Dec. 31st, 1904-05	No Revision
Corrected as of Dec. 31st, 1903-04	No Revision
Corrected as of Dec. 31st, 1902-03	No Revision
Corrected as of Dec. 31st, 1901-02	No Revision
Corrected as of Dec. 31st, 1900-01	No Revision

Sheet No. 64 V. 3, One of Pittsburgh, Fort Wayne and Chicago Railway
from Survey Station 13447+46.1 to Survey Station 13437+46.1
Sheet Division

RIGHT OF WAY AND TRACK MAP
PITTSBURGH, FORT WAYNE AND CHICAGO RAILWAY
OPERATED BY
PENNSYLVANIA COMPANY
WESTERN DIVISION
STATION 13394+66.1 TO STATION 13437+46.1
SCALE: 1" = 100 FT.
OFFICE OF VALUATION ENGINEER
PITTSBURGH, PA.
JUNE 30, 1916

