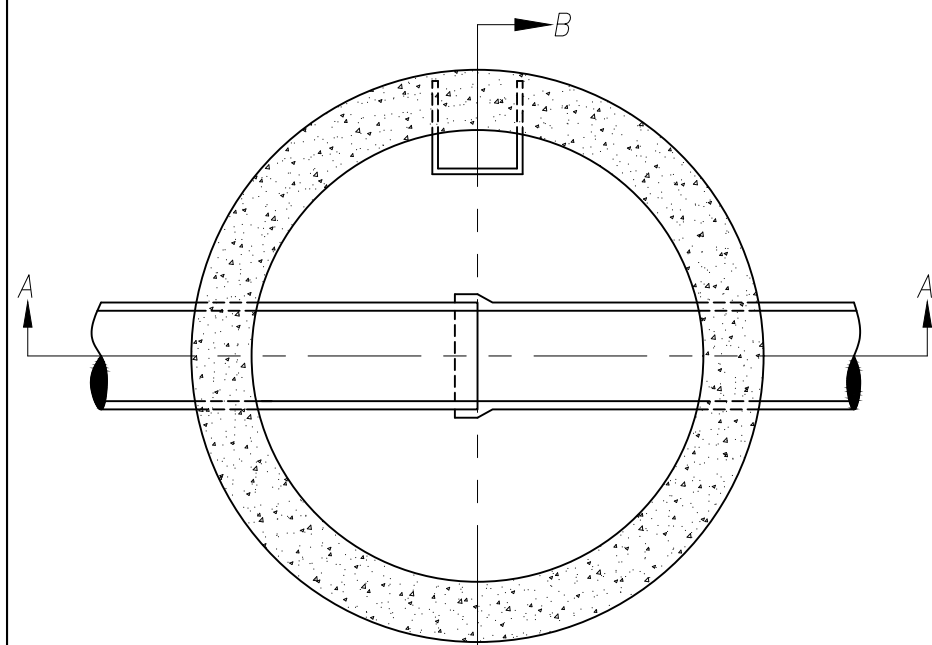
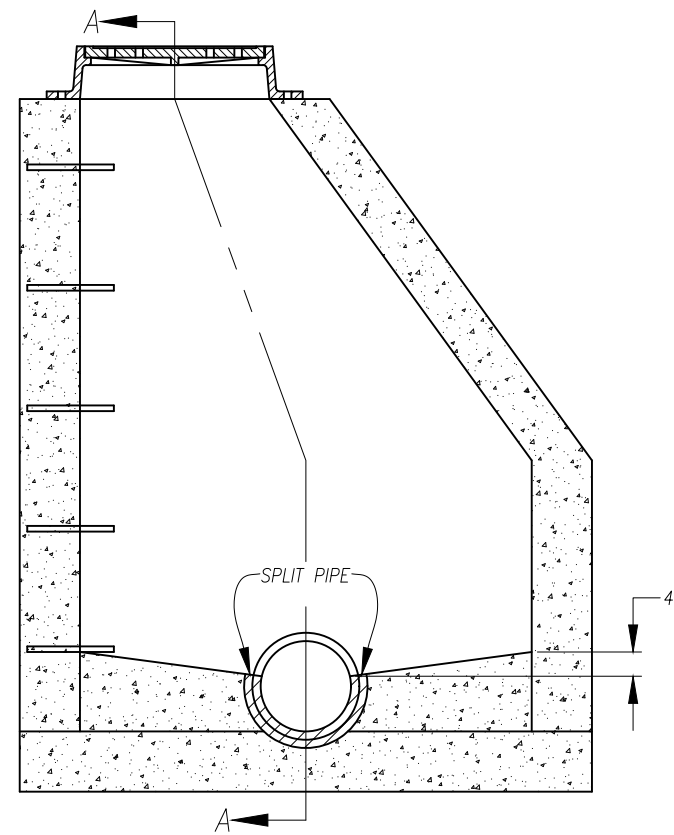


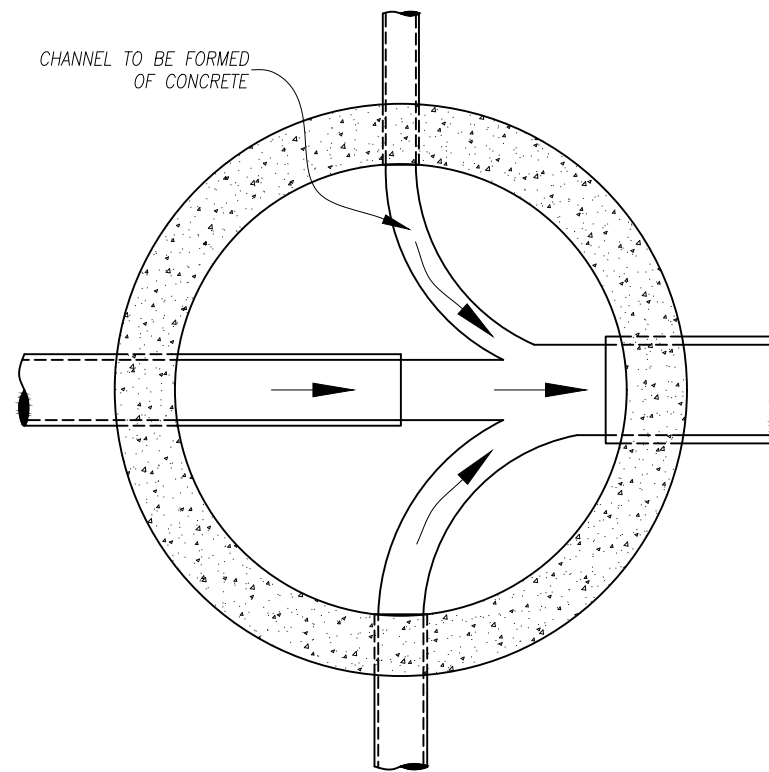
SECTION A-A



SECTION C-C



SECTION B-B



SECTION BELOW SPRING LINE SHOWING METHOD OF TURNING SIDE DRAINS

4'-0" FOR SEWERS 24" AND UNDER, STD. MANHOLE No. 1
 5'-0" FOR SEWERS 27" TO 42", STD. MANHOLE No. 2

NOTES

GENERAL: THE DESIGN SHOWN ON THIS DRAWING IS FOR CAST-IN-PLACE CONCRETE. THE THICKNESS OF THE WALLS SHALL NOT BE LESS THAN 8". THE THICKNESS OF THE WALLS SHALL BE INCREASED TO 12" FOR DEPTHS OVER 15'.

CONSTRUCTION: MANHOLES SHALL BE BUILT OF CAST-IN-PLACE CONCRETE. BOTTOM OF MANHOLES SHALL MEET THE REQUIREMENTS OF SECTION 499, CLASS "QC1" CONCRETE.

SETTING OF CASTING: THE BASE OF THE FRAME SHALL BE SET IN A FULL BED OF PORTLAND CEMENT MORTAR AND SO ADJUSTED TO CONFORM TO THE FINISHED GROUND OR PAVEMENT GRADE.

CASTINGS AND STEPS: MANHOLE CASTINGS SHALL BE NEENAH, EAST JORDAN OR EQUAL THAT MEETS THE APPROVAL OF THE ALLEN COUNTY ENGINEER. STEPS SHALL BE NEENAH OR ALLEN COUNTY ENGINEER APPROVED EQUAL. CASTINGS AND STEPS SHALL HAVE ONE COAT OF ASPHALT PAINT.

MANHOLES USED AS CATCH BASINS: SEE CASTINGS SPECIFIED ON STANDARD CONSTRUCTION DRAWING CB-1.

NOTE: MANHOLE DETAILS FOR SEWERS OVER 42" WILL BE SHOWN ON THE CONSTRUCTION PLANS.

REVISIONS			ALLEN COUNTY, OHIO COUNTY ENGINEER
NO.	DATE	BY	
1	6-3-76	TJP	MANHOLE DETAILS CAST-IN-PLACE CONCRETE
2	11-14-89	TJP	
3	10-5-06	RJM	
4	1-16-13	RJM	
5	5-16-16	ZJG	
6	01-01-23	ZJG	
STANDARD CONSTRUCTION DRAWING MH-1 & MH-2			DRAWN BY: Z.J.G. APPROVED BY: B. E. RHODES
DRAWN BY: Z.J.G. APPROVED BY: B. E. RHODES			